

4

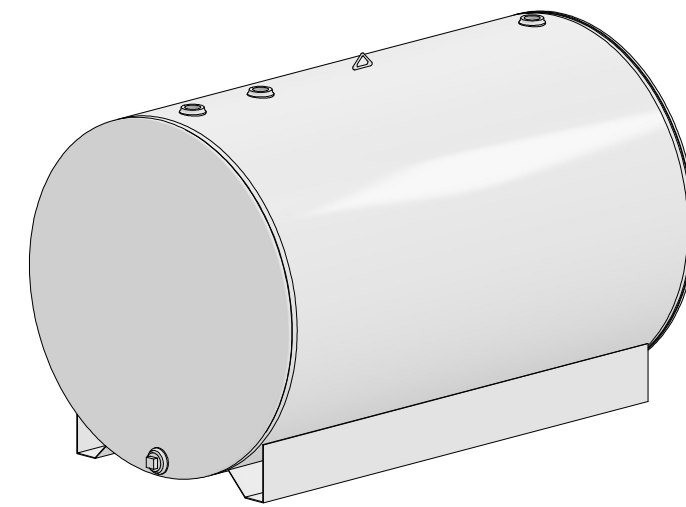
3

2

1

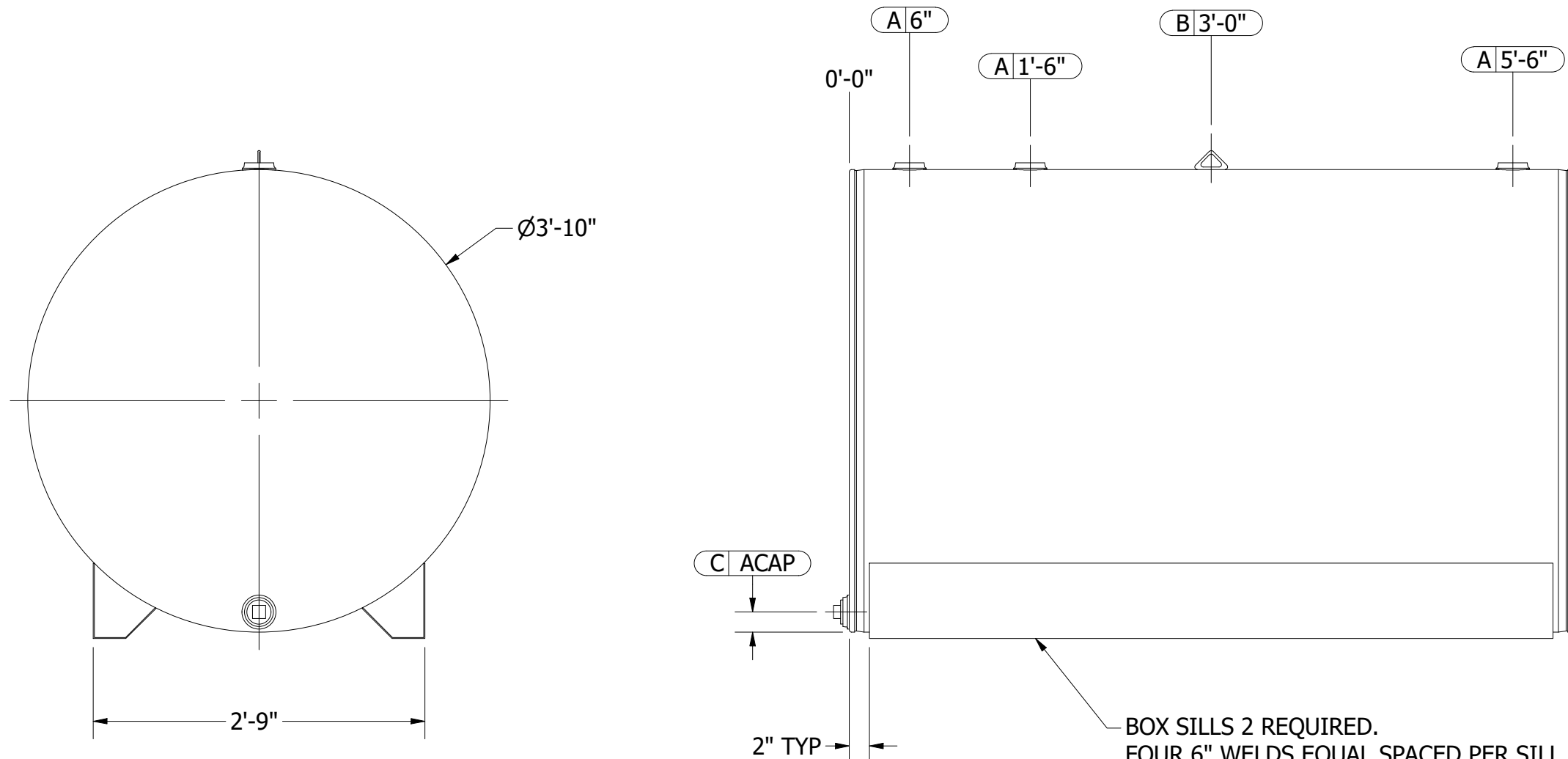
NOZZLE SCHEDULE

ITEM	QTY.	ITEM CODE	SIZE	TYPE	CLASS	NOTES
A	3	TF2CURVED	2"	FEMALE NPT	THRD. FLANGE	
B	1	LIFTLUG2-900SM	SMALL	LIFT LUG	6,800# EACH	
C	1	TF2FLAT	2"	FEMALE NPT	THRD. FLANGE	DRAIN, WITH STEEL PLUG



B

B



- NOTES:
- CLEAN TANK COMPLETELY AFTER WELDING.
 - INSPECT TANK FOR UNDERCUT & CONCAVE WELDS BEFORE SECOND TEST.
 - SECOND TEST TANK AFTER SILLS ARE WELDED.

PRODUCT CODE: SW516FSK46D		DESCRIPTION: 516 GALLON NON-UL SKID TANK Ø46" X 6'-0" LONG 12 GAUGE			STEEL TANK & FABRICATING CORP.		
FOR: STOCK		CUSTOMER APPROVAL:	QUANTITY: 6	CAPACITY: 516 GAL	APP. WEIGHT: 472 lbmass	COLUMBIA CITY, IN 46725	
PAINT: BLAST / ENAMEL WHITE		<input type="checkbox"/> MAKE NOTED CHANGES AND RE-SUBMIT <input type="checkbox"/> APPROVED WITH CHANGES NOTED <input type="checkbox"/> APPROVED AS DRAWN SIGNATURE: _____	DIAMETER: 46"	LENGTH: 6'	LABEL: NONE	DRAWN BY: KRM	CHECKED BY: GFS
		MATERIAL: A36/A1011	HEADS: 12GA	SHELL: 12GA	SCALE: 1 / 14	DATE: 10/23/2023	SHEET: 1 OF 1
		CUSTOMER ORDER#: -	STAFCO ORDER#: -	FILE NAME: SW516FSK46D.dwg			



4

3

2

1

A

A