

4

3

2

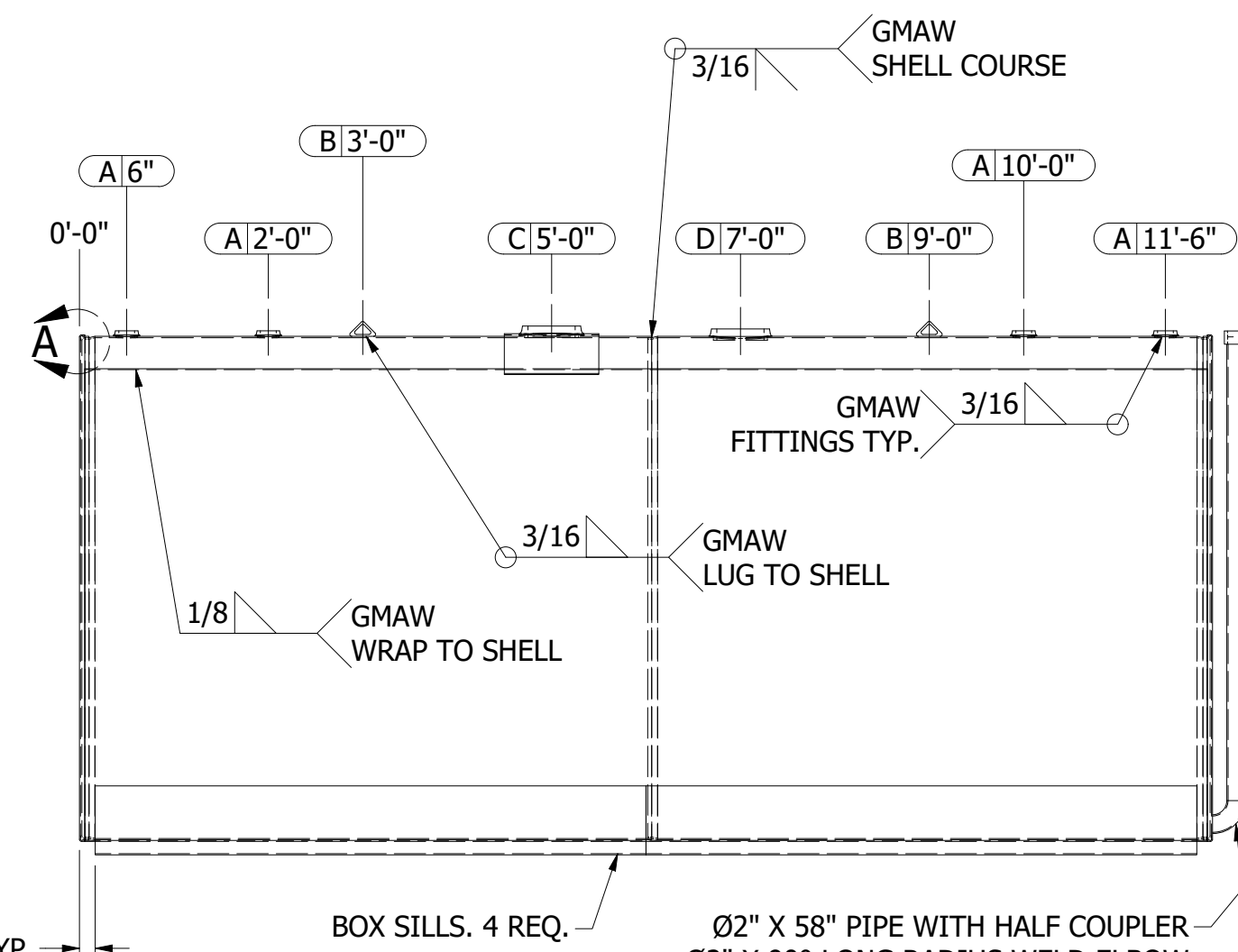
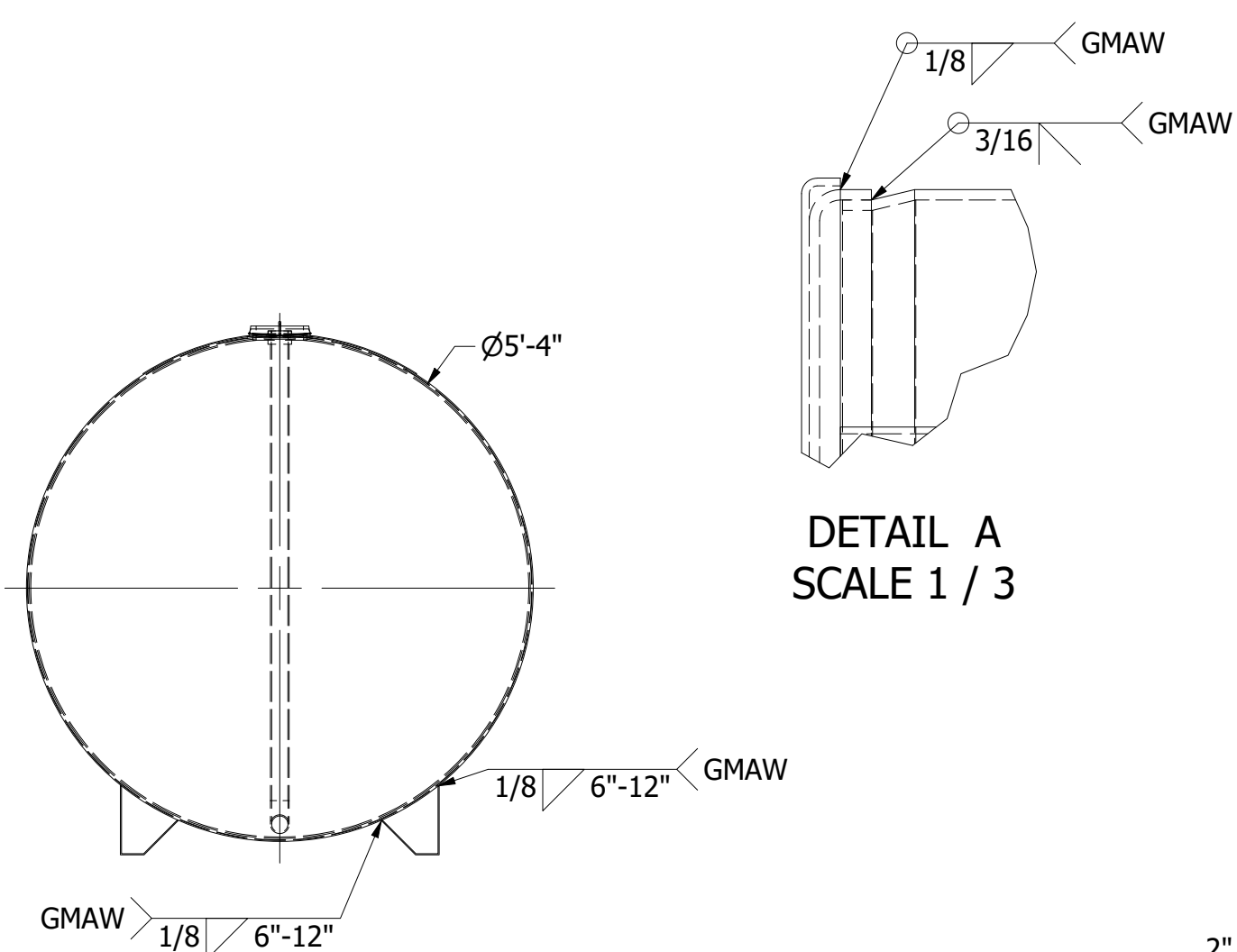
1

NOZZLE SCHEDULE

ITEM	QTY.	ITEM CODE	SIZE	TYPE	CLASS	NOTES
A	4	TF2CURVED	2"	FEMALE NPT	THRD. TANK FLANGE	
B	2	LIFTLUG2-900SM	LUG	SMALL LUG	6,800# EACH	
C	1	TF6CURVED	6"	FEMALE NPT	THRD. TANK FLANGE	INTERSTITIAL EMERGENCY VENT
D	1	TF6CURVED	6"	FEMALE NPT	THRD. TANK FLANGE	PRIMARY EMERGENCY VENT

B

B



- NOTES:
1. CLEAN TANK COMPLETELY AFTER WELDING.
 2. INSPECT TANK FOR UNDERCUT & CONCAVE WELDS BEFORE SECOND TEST.
 3. SECOND TEST TANK AFTER SILLS ARE WELDED.

PRODUCT CODE: DW2000ULSKT64D		DESCRIPTION: 2000 GAL UL-142 DOUBLE WALL SKID TANK			STEEL TANK & FABRICATING CORP.		
FOR: STOCK		CUSTOMER APPROVAL:		QUANTITY: 2	CAPACITY: 2000 GAL	APP. WEIGHT: 3213 lbmass	COLUMBIA CITY, IN 46725 800-852-9102 / 260-248-8971 / FAX 260-248-8973
PAINT: BLAST / ENAMEL WHITE		<input type="checkbox"/> MAKE NOTED CHANGES AND RE-SUBMIT <input type="checkbox"/> APPROVED WITH CHANGES NOTED <input type="checkbox"/> APPROVED AS DRAWN		DIAMETER: 64"	LENGTH: 12'	LABEL: UL-142	
SIGNATURE: _____		MATERIAL: MCS	HEADS: 7GA 10GA	SHELL: 7GA 10GA	DRAWN BY: KRM	CHECKED BY: GFS	DATE: 8/3/2023
		CUSTOMER ORDER#: -	STAFCO ORDER#: STOCK	SCALE: 1 / 22	FILE NAME: DW2000ULSKT64D.dwg		SHEET: 1 OF 1



4

3

2

1